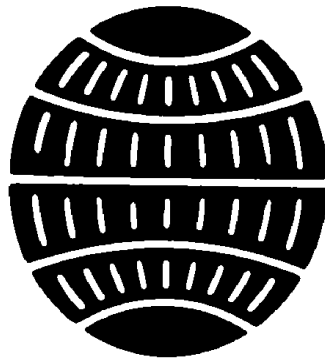


# CHAPTER 29



## ELECTRICIAN'S MATE (EM)

NAVPERS 18068F-29G  
CH-76

Updated: October 2018

## **ELECTRICIAN'S MATE (EM) TABLE OF CONTENTS**

|                                      |       |
|--------------------------------------|-------|
| <b>SCOPE OF RATING</b>               | EM-3  |
| <b>GENERAL INFORMATION</b>           | EM-4  |
| <b>ELECTRICAL SYSTEMS MAINTAINER</b> | EM-5  |
| AUXILIARY ELECTRICAL EQUIPMENT       | EM-5  |
| ELECTRICAL INSTALLATIONS             | EM-6  |
| ELEVATORS AND CONVEYORS              | EM-6  |
| LIFTING EQUIPMENT                    | EM-6  |
| LIGHTING SYSTEMS                     | EM-7  |
| MOTORS AND GENERATORS                | EM-7  |
| POWER DISTRIBUTION                   | EM-7  |
| SMALL CRAFT                          | EM-7  |
| TECHNICAL ADMINISTRATION             | EM-8  |
| <b>ELECTRICAL SYSTEMS TECHNICIAN</b> | EM-9  |
| AUXILIARY ELECTRICAL EQUIPMENT       | EM-9  |
| ELECTRICAL INSTALLATIONS             | EM-11 |
| ELEVATORS AND CONVEYORS              | EM-11 |
| LIFTING EQUIPMENT                    | EM-11 |
| LIGHTING SYSTEMS                     | EM-12 |
| MOTORS AND GENERATORS                | EM-12 |
| POWER DISTRIBUTION                   | EM-12 |
| SMALL CRAFT                          | EM-13 |
| TECHNICAL ADMINISTRATION             | EM-13 |

# NAVY ENLISTED OCCUPATIONAL STANDARDS

FOR

ELECTRICIAN'S MATE (EM)



## SCOPE OF RATING

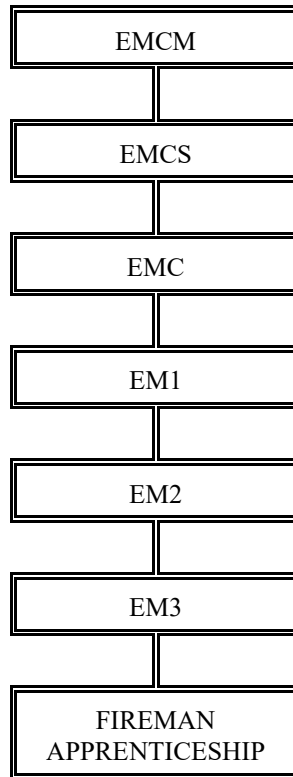
Electrician's Mates (EM) operate and control generators, switchboards, control equipment, and electrical equipment associated with engineering plants; operate and perform organizational and intermediate maintenance on power and lighting circuits, electrical fixtures, motors, generators, voltage and frequency regulators, controllers, distribution switchboards and other electrical equipment; test for short circuits, grounds or other casualties; repair and/or rebuild electrical equipment, including solid state circuitry elements.

---

These Occupational Standards are to be incorporated in Volume I, Part B, of the Manual of Navy Enlisted Manpower and Personnel Classifications and Occupational Standards (NAVPERS 18068F) as Chapter 29.

## GENERAL INFORMATION

### CAREER PATTERN



Normal path of advancement to Chief Warrant Officer and Limited Duty Officer categories can be found in OPNAVINST 1420.1.

For rating entry requirements, refer to MILPERSMAN 1306-618.

### SAFETY

**The observance of Operational Risk Management (ORM) and proper safety precautions in all areas is an integral part of each billet and the responsibility of every Sailor; therefore, it is a universal requirement for all ratings.**

**Job Title****Electrical Systems Maintainer****Job Code****003699****Job Family**

Installation, Maintenance, and Repair

**NOC**

TBD

**Short Title (30 Characters)**

ELECTRICAL SYSTEMS MAINTAINER

**Short Title (14 Characters)**

ELEC SYS MAINT

**Pay Plan**

Enlisted

**Career Field**

EM

**Other Relationships and Rules**

NEC UXXX series and other NECs as assigned

**Job Description**

Electrical Systems Maintainers perform operations and preventative maintenance of electrical distribution systems, motors and controllers, electrical generators, lighting systems, alarm and indicating systems, machinery vibration analysis equipment and other electrical and electronic support equipment; propulsion plant and auxiliary equipment; and other equipment essential for the movement of naval tactical forces.

**DoD Relationship****O\*NET Relationship****Group Title**

Electric Power

**DoD Code**

166200

**Occupation Title**

Electrical and Electronics  
Repairers, Commercial and  
Industrial Equipment

**SOC Code**

49-2094.00

**Job Family**

Installation, Maintenance,  
and Repair

**Skills***Reading Comprehension**Equipment Maintenance**Coordination**Quality Control Analysis**Systems Evaluation**Time Management**Writing**Critical Thinking**Instructing**Management of Material Resources***Abilities***Written Comprehension**Selective Attention**Problem Sensitivity**Category Flexibility**Finger Dexterity**Information Ordering**Control Precision**Deductive Reasoning**Fluency of Ideas**Near Vision***AUXILIARY ELECTRICAL EQUIPMENT****Paygrade****Task Type****Task Statements**

E4

CORE

Calibrate electronic measurement instruments (e.g. gauges, switches)

E4

CORE

Conduct preventive maintenance of heating elements

E4

CORE

Conduct preventive maintenance on air compressor electrical components

E4

CORE

Conduct preventive maintenance on air conditioning system electrical  
components

E4

CORE

Conduct preventive maintenance on alarm system components

E4

CORE

Conduct preventive maintenance on battery support systems

E5

CORE

Conduct preventive maintenance on boiler electrical components

E4

CORE

Conduct preventive maintenance on chilled water system components

E4

CORE

Conduct preventive maintenance on Collection, Holding, and Transfer (CHT)  
system electrical components

E5

CORE

Conduct preventive maintenance on degaussing system components

E4

CORE

Conduct preventive maintenance on dehydrator electrical components

E4

CORE

Conduct preventive maintenance on electrically-operated valve components

E4

CORE

Conduct preventive maintenance on engine electrical components

E5

CORE

Conduct preventive maintenance on fire protection system electrical components

### **AUXILIARY ELECTRICAL EQUIPMENT (CONT'D)**

| <b><u>Paygrade</u></b> | <b><u>Task Type</u></b> | <b><u>Task Statements</u></b>  |
|------------------------|-------------------------|--|
| E4                     | CORE                    | Conduct preventive maintenance on galley equipment electrical components                                       |
| E5                     | CORE                    | Conduct preventive maintenance on generator governor system electrical components                              |
| E4                     | CORE                    | Conduct preventive maintenance on laundry equipment electrical components                                      |
| E4                     | CORE                    | Conduct preventive maintenance on mess deck equipment electrical components                                    |
| E4                     | CORE                    | Conduct preventive maintenance on potable water systems  |
| E7                     | CORE                    | Conduct preventive maintenance on precipitator components  |
| E4                     | CORE                    | Conduct preventive maintenance on Programmable Logic Controllers (PLC)   |
| E4                     | CORE                    | Conduct preventive maintenance on refrigeration system electrical components                                   |
| E4                     | CORE                    | Conduct preventive maintenance on salinity indicating system components  |
| E4                     | CORE                    | Conduct preventive maintenance on scullery equipment electrical components                                     |
| E5                     | NON-CORE                | Conduct preventive maintenance on shaft speed sensing, indication, and Engine Order Telegraph (EOT) components |
| E4                     | CORE                    | Conduct preventive maintenance on ship's heating system electrical components                                  |
| E5                     | CORE                    | Conduct preventive maintenance on steering control system electrical components                                |
| E4                     | CORE                    | Conduct preventive maintenance on storage batteries  |
| E5                     | NON-CORE                | Conduct preventive maintenance on ultrasonic cleaner components  |
| E4                     | CORE                    | Conduct preventive maintenance on ventilation system electrical components                                     |
| E4                     | CORE                    | Conduct preventive maintenance on welding equipment electrical components                                      |

### **ELECTRICAL INSTALLATIONS**

| <b><u>Paygrade</u></b> | <b><u>Task Type</u></b> | <b><u>Task Statements</u></b> |
|------------------------|-------------------------|-------------------------------|
| E4                     | CORE                    | Inspect cableways             |

### **ELEVATORS AND CONVEYORS**

| <b><u>Paygrade</u></b> | <b><u>Task Type</u></b> | <b><u>Task Statements</u></b>   |
|------------------------|-------------------------|---|
| E4                     | CORE                    | Conduct preventive maintenance on control stations                              |
| E4                     | CORE                    | Conduct preventive maintenance on conveyor electrical components                |
| E4                     | CORE                    | Conduct preventive maintenance on elevator and dumbwaiter electrical components |

### **LIFTING EQUIPMENT**

| <b><u>Paygrade</u></b> | <b><u>Task Type</u></b> | <b><u>Task Statements</u></b>                                    |
|------------------------|-------------------------|--|
| E4                     | CORE                    | Conduct preventive maintenance on capstan electrical components  |
| E4                     | CORE                    | Conduct preventive maintenance on crane electrical components    |
| E4                     | CORE                    | Conduct preventive maintenance on electrical winch components    |
| E4                     | CORE                    | Conduct preventive maintenance on hoist electrical components    |
| E4                     | CORE                    | Conduct preventive maintenance on windlass electrical components |

## LIGHTING SYSTEMS

| <u>Paygrade</u> | <u>Task Type</u> | <u>Task Statements</u>   |
|-----------------|------------------|--|
| E4              | CORE             | Conduct preventive maintenance on flight deck lighting system components           |
| E4              | CORE             | Conduct preventive maintenance on general lighting system components               |
| E4              | CORE             | Conduct preventive maintenance on navigation and signal lighting system components |

## MOTORS AND GENERATORS

| <u>Paygrade</u> | <u>Task Type</u> | <u>Task Statements</u>   |
|-----------------|------------------|--|
| E4              | CORE             | Conduct preventive maintenance on Alternating Current (AC) motors                      |
| E4              | CORE             | Conduct preventive maintenance on Direct Current (DC) generators                       |
| E4              | CORE             | Conduct preventive maintenance on Direct Current (DC) motors                           |
| E4              | NON-CORE         | Conduct preventive maintenance on Motor Generator (MG) sets                            |
| E5              | CORE             | Conduct preventive maintenance on Ship's Service Generator (SSG) electrical components |
| E5              | CORE             | Conduct preventive maintenance on static converter components                          |
| E5              | CORE             | Conduct preventive maintenance on static inverter components                           |

## POWER DISTRIBUTION

| <u>Paygrade</u> | <u>Task Type</u> | <u>Task Statements</u>   |
|-----------------|------------------|--|
| E4              | CORE             | Conduct preventive maintenance Arc Fault Detector (AFD) system components        |
| E4              | CORE             | Conduct preventive maintenance on Automatic Bus Transfer (ABT) components        |
| E4              | CORE             | Conduct preventive maintenance on casualty power system components               |
| E4              | CORE             | Conduct preventive maintenance on circuit breakers                               |
| E5              | CORE             | Conduct preventive maintenance on electrical distribution switchboard components |
| E4              | CORE             | Conduct preventive maintenance on electrical power monitoring systems            |
| E4              | CORE             | Conduct preventive maintenance on grounding straps                               |
| E4              | CORE             | Conduct preventive maintenance on magnetic controllers                           |
| E4              | CORE             | Conduct preventive maintenance on Manual Bus Transfer (MBT) components           |
| E4              | CORE             | Conduct preventive maintenance on power distribution system components           |
| E4              | CORE             | Conduct preventive maintenance on shore power components                         |
| E4              | CORE             | Conduct preventive maintenance on Uninterruptable Power Supplies (UPS)           |
| E7              | CORE             | Validate close out of load center, switchboard, and generator                    |

## SMALL CRAFT

| <u>Paygrade</u> | <u>Task Type</u> | <u>Task Statements</u>  |
|-----------------|------------------|---|
| E4              | CORE             | Conduct daily boat report for electrical components                                     |
| E4              | CORE             | Conduct preventive maintenance on small craft electrical distribution system components |
| E4              | CORE             | Conduct preventive maintenance on small craft starter system components                 |
| E4              | CORE             | Repair small craft electrical distribution system components                            |
| E4              | CORE             | Troubleshoot small craft electrical distribution system components                      |

## TECHNICAL ADMINISTRATION

| <b><u>Paygrade</u></b> | <b><u>Task Type</u></b> | <b><u>Task Statements</u></b>  |
|------------------------|-------------------------|--|
| E4                     | CORE                    | Conduct electrical checks on Master Light Off Checklist Sheet (MLOCS)        |
| E7                     | CORE                    | Manage electrical safety programs  |
| E7                     | CORE                    | Manage tag out program   |
| E7                     | CORE                    | Validate working drawings  |
| E7                     | CORE                    | Verify accuracy of administrative programs (e.g. tag out, electrical safety) |



**Job Title****Electrical Systems Technician****Job Code****003302****Job Family**

Installation, Maintenance, and Repair

**NOC**

TBD

**Short Title (30 Characters)**

ELECTRICAL SYSTEMS TECHNICIAN

**Short Title (14 Characters)**

ELEC SYS TECH

**Pay Plan**

Enlisted

**Career Field**

EM

**Other Relationships and Rules**

NEC UXXX series and other NECs as assigned

**Job Description**

Electrical Systems Technicians perform operations, troubleshooting, and corrective maintenance of electrical distribution systems, motors and controllers, electrical generators, lighting systems, alarm and indicating systems, machinery vibration analysis equipment, other electrical and electronic support equipment and interpret electrical schematics, diagrams and blueprints associated with those systems; propulsion plant and auxiliary equipment; and other equipment essential for the movement of naval tactical forces.

**DoD Relationship****Group Title**

Electric Power

**DoD Code**

166200

**O\*NET Relationship****Occupation Title**

Electrical and Electronics  
Repairers, Commercial and  
Industrial Equipment

**SOC Code**

49-2094.00

**Job Family**

Installation, Maintenance,  
and Repair

**Skills***Systems Evaluation**Systems Analysis**Repairing**Time Management**Coordination**Quality Control Analysis**Instructing**Monitoring**Speaking**Active Learning***Abilities***Finger Dexterity**Deductive Reasoning**Visualization**Fluency of Ideas**Information Ordering**Oral Expression**Problem Sensitivity**Selective Attention**Manual Dexterity**Written Comprehension***AUXILIARY ELECTRICAL EQUIPMENT****Paygrade****Task Type****Task Statements**

E4

CORE

Calibrate electronic measurement instruments (e.g. gauges, switches)

E5

CORE

Repair air compressor electrical components

E5

CORE

Repair air conditioning system electrical components

E4

CORE

Repair alarm system components

E5

CORE

Repair battery support systems

E5

CORE

Repair boiler electrical components

E4

CORE

Repair chilled water system components

E5

CORE

Repair Collection, Holding, and Transfer (CHT) system electrical components

E6

CORE

Repair degaussing system components

E5

CORE

Repair dehydrator electrical components

E5

CORE

Repair electrically-operated valve components

E5

CORE

Repair engine electrical components

E5

CORE

Repair fire protection system electrical components

E4

CORE

Repair galley equipment electrical components

E6

CORE

Repair generator governor system electrical components

E4

CORE

Repair heating elements

### AUXILIARY ELECTRICAL EQUIPMENT (CONT'D)

| <b><u>Pavgrade</u></b> | <b><u>Task Type</u></b> | <b><u>Task Statements</u></b>   |
|------------------------|-------------------------|---|
| E4                     | CORE                    | Repair laundry equipment electrical components                                      |
| E4                     | CORE                    | Repair mess deck equipment electrical components                                    |
| E4                     | CORE                    | Repair potable water systems  |
| E7                     | CORE                    | Repair precipitator components  |
| E4                     | CORE                    | Repair Programmable Logic Controllers (PLC)   |
| E5                     | CORE                    | Repair refrigeration system electrical components                                   |
| E5                     | CORE                    | Repair salinity indicating system components  |
| E4                     | CORE                    | Repair scullery equipment electrical components                                     |
| E5                     | NON-CORE                | Repair shaft speed sensing, indication, and Engine Order Telegraph (EOT) components |
| E4                     | CORE                    | Repair ship's heating system electrical components                                  |
| E5                     | CORE                    | Repair ship's steering control system electrical components                         |
| E5                     | NON-CORE                | Repair ultrasonic cleaner components  |
| E4                     | CORE                    | Repair ventilation system electrical components                                     |
| E4                     | CORE                    | Repair welding equipment electrical components (e.g., ship force capable repairs)   |
| E5                     | CORE                    | Troubleshoot air compressor electrical components                                   |
| E5                     | CORE                    | Troubleshoot air conditioning system electrical components                          |
| E4                     | CORE                    | Troubleshoot alarm system components  |
| E5                     | CORE                    | Troubleshoot battery support systems  |
| E5                     | CORE                    | Troubleshoot boiler electrical components   |
| E4                     | CORE                    | Troubleshoot chilled water system components  |
| E4                     | CORE                    | Troubleshoot Collection, Holding, and Transfer (CHT) system electrical components   |
| E5                     | CORE                    | Troubleshoot degaussing system components   |
| E5                     | CORE                    | Troubleshoot dehydrator electrical components                                       |
| E5                     | CORE                    | Troubleshoot electrically-operated valve components                                 |
| E5                     | CORE                    | Troubleshoot engine electrical components   |
| E5                     | CORE                    | Troubleshoot fire protection system electrical components                           |
| E4                     | CORE                    | Troubleshoot galley equipment electrical components                                 |
| E5                     | CORE                    | Troubleshoot generator governor system electrical components                        |
| E4                     | CORE                    | Troubleshoot laundry equipment electrical components                                |
| E4                     | CORE                    | Troubleshoot mess deck equipment electrical components                              |
| E4                     | CORE                    | Troubleshoot preventative maintenance of heating elements                           |
| E4                     | CORE                    | Troubleshoot potable water systems  |
| E5                     | CORE                    | Troubleshoot precipitator components  |
| E4                     | CORE                    | Troubleshoot Programmable Logic Controllers (PLC)                                   |
| E5                     | CORE                    | Troubleshoot refrigeration system electrical components                             |
| E5                     | CORE                    | Troubleshoot salinity indicating system components                                  |
| E4                     | CORE                    | Troubleshoot scullery equipment electrical components                               |

### **AUXILIARY ELECTRICAL EQUIPMENT**

| <b><u>Paygrade</u></b> | <b><u>Task Type</u></b> | <b><u>Task Statements</u></b>   |
|------------------------|-------------------------|---|
| E5                     | NON-CORE                | Troubleshoot shaft speed sensing, indication, and Engine Order Telegraphic (EOT) components |
| E4                     | CORE                    | Troubleshoot ship's heating system electrical components                                    |
| E5                     | CORE                    | Troubleshoot ship's steering control system electrical components                           |
| E5                     | NON-CORE                | Troubleshoot ultrasonic cleaner components  |
| E4                     | CORE                    | Troubleshoot ventilation system electrical components                                       |
| E4                     | CORE                    | Troubleshoot welding equipment electrical components (e.g., ship force capable repairs)     |

### **ELECTRICAL INSTALLATIONS**

| <b><u>Paygrade</u></b> | <b><u>Task Type</u></b> | <b><u>Task Statements</u></b>          |
|------------------------|-------------------------|--|
| E4                     | CORE                    | Disconnect electrical equipment        |
| E4                     | CORE                    | Install electrical equipment upgrades  |
| E4                     | CORE                    | Install hardwired electrical equipment |
| E4                     | CORE                    | Install permanent cables               |
| E4                     | CORE                    | Isolate damaged electrical equipment   |
| E4                     | CORE                    | Remove dead ended cables               |
| E4                     | CORE                    | Repair damaged electrical equipment    |
| E4                     | CORE                    | Solder electrical leads to equipment   |

### **ELEVATORS AND CONVEYORS**

| <b><u>Paygrade</u></b> | <b><u>Task Type</u></b> | <b><u>Task Statements</u></b>                              |
|------------------------|-------------------------|--|
| E4                     | CORE                    | Repair control stations                                    |
| E4                     | CORE                    | Repair conveyor electrical components                      |
| E4                     | CORE                    | Repair elevator and dumbwaiter electrical components       |
| E4                     | CORE                    | Troubleshoot control stations                              |
| E4                     | CORE                    | Troubleshoot conveyor electrical components                |
| E4                     | CORE                    | Troubleshoot elevator and dumbwaiter electrical components |

### **LIFTING EQUIPMENT**

| <b><u>Paygrade</u></b> | <b><u>Task Type</u></b> | <b><u>Task Statements</u></b>               |
|------------------------|-------------------------|---|
| E4                     | CORE                    | Repair capstan electrical components        |
| E5                     | CORE                    | Repair crane electrical components          |
| E4                     | CORE                    | Repair electrical winch components          |
| E5                     | CORE                    | Repair hoist electrical components          |
| E5                     | CORE                    | Repair windlass electrical components       |
| E4                     | CORE                    | Troubleshoot capstan electrical components  |
| E5                     | CORE                    | Troubleshoot crane electrical components    |
| E4                     | CORE                    | Troubleshoot electrical winch components    |
| E5                     | CORE                    | Troubleshoot hoist electrical components    |
| E5                     | CORE                    | Troubleshoot windlass electrical components |

### **LIGHTING SYSTEMS**

| <b><u>Paygrade</u></b> | <b><u>Task Type</u></b> | <b><u>Task Statements</u></b>                                 |
|------------------------|-------------------------|---|
| E4                     | CORE                    | Repair flight deck lighting system components                 |
| E4                     | CORE                    | Repair general lighting system components                     |
| E4                     | CORE                    | Repair navigation and signal lighting system components       |
| E4                     | CORE                    | Troubleshoot flight deck lighting system components           |
| E4                     | CORE                    | Troubleshoot general lighting system components               |
| E4                     | CORE                    | Troubleshoot navigation and signal lighting system components |

### **MOTORS AND GENERATORS**

| <b><u>Paygrade</u></b> | <b><u>Task Type</u></b> | <b><u>Task Statements</u></b>   |
|------------------------|-------------------------|---|
| E7                     | CORE                    | Conduct closeout inspections on Ship's Service Generator (SSG)                |
| E5                     | CORE                    | Repair Direct Current (DC) generators   |
| E5                     | NON-CORE                | Repair Motor Generator (MG) sets  |
| E5                     | CORE                    | Repair Ship's Service Generator (SSG) electrical components                   |
| E5                     | CORE                    | Repair static converter components  |
| E5                     | CORE                    | Repair static inverter components   |
| E7                     | CORE                    | Supervise maintenance on Ship's Service Generator (SSG) electrical components |
| E5                     | CORE                    | Troubleshoot Direct Current (DC) generators                                   |
| E5                     | NON-CORE                | Troubleshoot Motor Generator (MG) sets  |
| E5                     | CORE                    | Troubleshoot Ship's Service Generator (SSG) electrical components             |
| E5                     | CORE                    | Troubleshoot static converter components                                      |
| E5                     | CORE                    | Troubleshoot static inverter components                                       |

### **POWER DISTRIBUTION**

| <b><u>Paygrade</u></b> | <b><u>Task Type</u></b> | <b><u>Task Statements</u></b>                           |
|------------------------|-------------------------|---|
| E4                     | CORE                    | Perform shore power rigging and unrigging               |
| E5                     | CORE                    | Repair Arc Fault Detector (AFD) system components       |
| E5                     | CORE                    | Repair Automatic Bus Transfer (ABT) components          |
| E4                     | CORE                    | Repair casualty power system components                 |
| E4                     | CORE                    | Repair circuit breakers                                 |
| E5                     | CORE                    | Repair electrical distribution switchboard components   |
| E5                     | CORE                    | Repair electrical power monitoring systems              |
| E4                     | CORE                    | Repair magnetic controllers                             |
| E4                     | CORE                    | Repair Manual Bus Transfer (MBT) components             |
| E5                     | CORE                    | Repair power distribution system components             |
| E5                     | CORE                    | Repair Uninterruptable Power Supplies (UPS)             |
| E7                     | CORE                    | Supervise electric plant dynamic testing                |
| E7                     | CORE                    | Supervise shore power rigging and unrigging             |
| E7                     | CORE                    | Test casualty power system                              |
| E5                     | CORE                    | Troubleshoot Arc Fault Detector (AFD) system components |
| E5                     | CORE                    | Troubleshoot Automatic Bus Transfer (ABT) components    |
| E4                     | CORE                    | Troubleshoot casualty power system components           |

### **POWER DISTRIBUTION (CONT'D)**

| <b><u>Paygrade</u></b> | <b><u>Task Type</u></b> | <b><u>Task Statements</u></b>   |
|------------------------|-------------------------|---|
| E4                     | CORE                    | Troubleshoot circuit breakers   |
| E5                     | CORE                    | Troubleshoot electrical distribution switchboard components               |
| E5                     | CORE                    | Troubleshoot electrical power monitoring systems                          |
| E4                     | CORE                    | Troubleshoot magnetic controllers   |
| E4                     | CORE                    | Troubleshoot Manual Bus Transfer (MBT) components                         |
| E5                     | CORE                    | Troubleshoot power distribution system components (e.g. ground isolation) |
| E5                     | CORE                    | Troubleshoot Uninterruptable Power Supplies (UPS)                         |
| E7                     | CORE                    | Validate close out of load center, switchboard, and generator             |

### **SMALL CRAFT**

| <b><u>Paygrade</u></b> | <b><u>Task Type</u></b> | <b><u>Task Statements</u></b>                      |
|------------------------|-------------------------|--|
| E4                     | CORE                    | Repair small craft starter system components       |
| E4                     | CORE                    | Troubleshoot small craft starter system components |

### **TECHNICAL ADMINISTRATION**

| <b><u>Paygrade</u></b> | <b><u>Task Type</u></b> | <b><u>Task Statements</u></b>  |
|------------------------|-------------------------|--|
| E6                     | NON-CORE                | Authorize Quality Assurance (QA) repair forms                                      |
| E7                     | CORE                    | Conduct command tag out training   |
| E4                     | CORE                    | Conduct electrical checks on Master Light Off Checklist Sheet (MLOCS)              |
| E4                     | CORE                    | Conduct electrical safety checks on personnel electronic equipment                 |
| E5                     | CORE                    | Conduct electrical safety training   |
| E5                     | CORE                    | Generate working drawings  |
| E4                     | CORE                    | Log wire removals and replacements   |
| E7                     | CORE                    | Manage electrical safety programs  |
| E7                     | CORE                    | Manage tag out program   |
| E5                     | CORE                    | Train Repair Party Electricians (RPE)  |
| E7                     | CORE                    | Validate Formal Work Packages (FWP) for motor rewind                               |
| E5                     | NON-CORE                | Validate Quality Assurance (QA) repair forms                                       |
| E7                     | CORE                    | Validate working drawings  |
| E7                     | CORE                    | Verify completion of electrical checks on Master Light Off Checklist Sheet (MLOCS) |